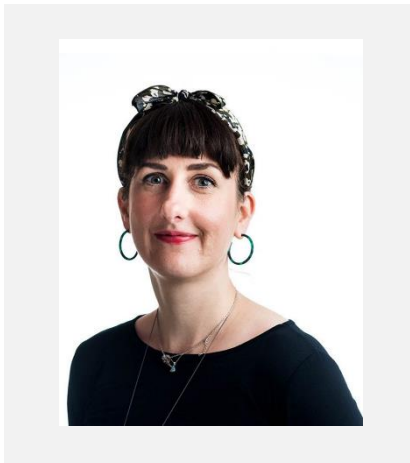




Manufacturing 2075

Thursday 3 December



Dr Abigail Hird

Knowledge Transfer Manager – Manufacturing,
KTN

At KTN Abi leads on 'Helping Innovators to Manufacture' – supporting companies as they Navigate the [Design to Manufacture Journey](#) and, as part of the Manufacturing Made Smarter ISCF, helping start-ups developing technologies for enhancing manufacturing get them to market. This often involves getting creative and asking challenging questions early on to maximise the likelihood of commercialisation success – understanding the market, design for manufacture, supporting manufacturing supply chain development, finding manufacturing partners, manufacturing strategy and preparation for funding and/or investment. Abi holds a Doctorate in Systems Engineering, an MEng in Product Design Engineering and is a Fellow of the RSA.

With deep expertise in product innovation processes and engineering management, Abi has experience in both industry and academia and has led multi-partner projects in a range of sectors including automotive, aerospace, logistics, defence, textiles and medical devices. Abi is passionate about the inherent value of people and the benefits of inclusivity and systems thinking in innovation.