



Cranfield Forensic Institute

MSc Forensic Programme

18th March 2021

www.cranfield.ac.uk

What we can offer you

State of the art facilities

Cranfield Campus

- £7.2 million investment into a centre of excellence within forensic science higher education:
 - State-of-the-art laboratories,
 - new equipment,
 - CSI facilities,
 - trained by active CSI's,
 - Taphonomy facility.

Shrivenham Campus

- Armoury,
- Experimental and Small arms ranges,
- Explosive range – ERDA,
- additional Security Clearance Required.

Other Facilities

- COTEC,
- excavation sites worldwide.

What we can offer you

Research and teaching excellence

Course content developed and taught by acknowledged experts who incorporate professional expertise with current knowledge gained through active participation within the forensic industry.



MS Forensic Programme

Course Outline

MSc Themes

- Forensic Archaeology and Anthropology,
- Forensic Ballistics,
- Forensic Explosive and Explosion Investigation,
- Forensic Investigation of Heritage Crime,
- Forensic Investigation,
- Full/Part-time study options.

Course structure

- Modules worth 10 credits,
- Compulsory and Elective Modules,
- One-week modules.

Assessment

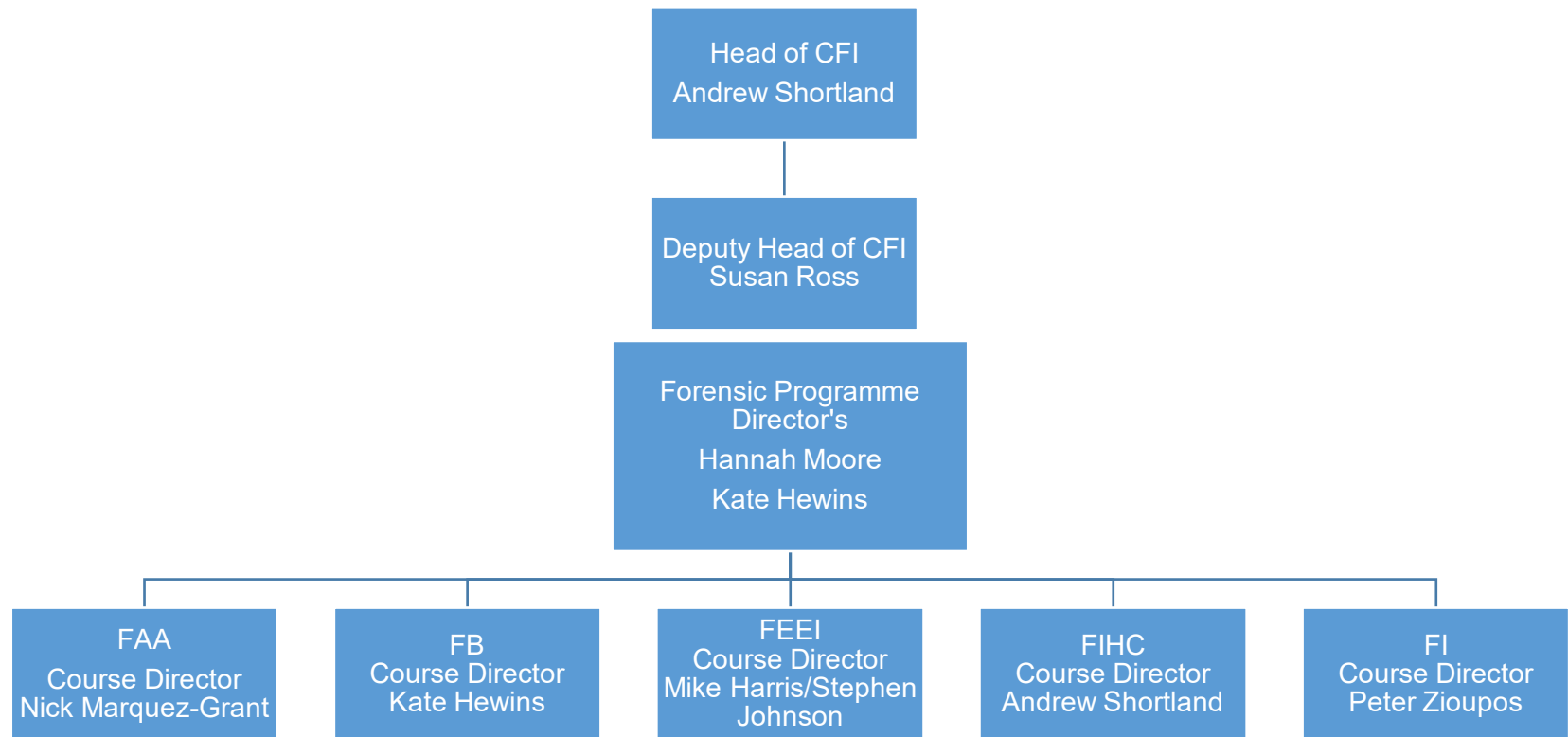
- Wide spectrum of assessment types e.g., presentations, expert witness statements, laboratory reports, examinations etc.

Research Projects

- 20,000 words thesis or short journal paper.



Forensic Programme Structure





Forensic Archaeology and Anthropology MSc (FAA)

Course Director

Dr Nicholas Márquez-Grant

n.marquezgrant@cranfield.ac.uk

www.cranfield.ac.uk

Forensic Archaeology and Anthropology

- Hands-on anthropological skeletal analysis.
 - Virtual autopsy table,
 - Human skeletal collections,
 - Chartered Forensic Anthropologist,
 - Mass grave simulation,
 - Practical Archaeological excavation,
 - Experienced Forensic Archaeologists.
-
- Some extra-curricular opportunities to work in practical, real-world environments:
 - Rat Island (MoD award, BBC Four),
 - inventory of human remains,
 - specialised MSc projects in the UK and abroad: Italy, Lithuania, Spain, etc.,
 - Spanish Civil War, WWI and WWII missions.



Forensic Archaeology and Anthropology

- Humanitarian: Identification of WWI / WWII casualties,
- Identification of British, German, French, Australian, New Zealand, USA Soldiers,
- Deployment to:
 - Belgium,
 - France,
 - Germany,
 - Italy,
 - Republic of Kiribati.
- Collaborate with:
 - Joint Casualty and Compassionate Centre (MOD),
 - Defense POW/MIA Accounting Agency,
 - History Flight, USA,
 - Flanders Heritage Agency, Belgium,
 - LGC (Forensic Science Provider).



Soldiers killed during WW1 named via DNA from relatives

© 22 March 2014 | UK





Forensic Ballistics MSc (FB)

Course Director
Dr Kate Hewins

k.norton-hewins@cranfield.ac.uk

www.cranfield.ac.uk

Forensic Ballistics

Unique facilities include:

- Armoury,
- outdoor 25m range,
- indoor experimental range,
- ERDA/COTEC,
- Section 5 firearms License,
- handling firearms,
- live firing of weapons,
- state of the art technology.



Forensic Ballistics

- Serial Number Restoration,
- Toolmark analysis,
- Ammunition Comparison,
- External ballistics,
- Internal ballistics,
- Terminal ballistics,
- Wound ballistics.





Forensic Explosive and Explosions Investigation MSc (FEEI)

Course Directors

Mike Harris, Stephen Johnson

Mike.e.harris@cranfield.ac.uk

s.johnson@cranfield.ac.uk

www.cranfield.ac.uk

Forensic Explosive and Explosion Investigation

You will investigate:

- Explosives,
 - Explosive Devices,
 - Improvised Explosive Devices,
 - Fire,
 - Explosions,
 - Post Blast Scenes,
 - Effects on Structures.
-
- Explosive analysis,
 - Analytical techniques,
 - Intelligence management.



Forensic Explosive and Explosion Investigation

- Visiting lecturers,
- External visits,
- Unique facilities:
 - Explosives Labs at Centre for Defence Chemistry,
 - UK MoD Technology School,
 - COTEC,
 - ERDA.





Forensic Investigation of Heritage Crime MSc (FIHC)

Course Director

Professor Andrew Shortland

a.shortland@cranfield.ac.uk

www.cranfield.ac.uk

Forensic Investigation of Heritage Crime

- UK Heritage Crime:
 - Theft,
 - metal detecting,
 - vandalism.
- International Heritage Destruction:
 - Illicit antiquities,
 - terrorist financing,
 - Heritage as a terrorist weapon.
- Historic England, Met Police, British Army, UNESCO, Blue Shield, etc.



Forensic Investigation of Heritage Crime

- Research:
 - High profile development of techniques,
 - materials,
 - dating.
- Teaching:
 - Internally: on MSc degrees.
 - Externally:
 - Courtauld,
 - Oxford, Harvard, Northwestern, etc.
- Consultancy:
 - Ashmolean Museum, Oxford,
 - Sothebys, Christies, Bonhams,
 - Most major Western Museums.





Forensic Investigation MSc (FI)

Course Director
Professor Peter Zioupos

p.zioupos@cranfield.ac.uk

www.cranfield.ac.uk

Forensic Investigation

- Bespoke,
- Highly hands-on/practical,
- Full forensic process:
 - Scene collection,
 - lab analysis and interpretation,
 - expert witness in court.
- Well-rounded graduate within the field of FS,
- One of our most popular themes.



Why choose CFI?

- Operational staff,
- unique facilities,
- postgraduate University,
- research excellence and operational academics – research led teaching,
- state-of-the-art facilities,
- accredited by The Chartered Society of Forensic Sciences,
- CFI Excellence Scholarship 2021.





**If you have any further
questions, please
contact:**

studyforensics@cranfield.ac.uk

www.cranfield.ac.uk



www.cranfield.ac.uk

T: +44 (0)1793 785810



@cranfielduni



@cranfielduni



/cranfielduni